



Z CORPORATION™

Setting the standard for Fast, Affordable, Color 3D Printing



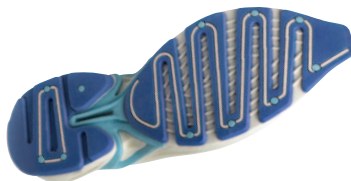
CAD



PRODUCT



PRINTER



PROTOTYPE

Z CORPORATION™

- Founded 1994
- Located in Burlington, MA (USA) – Boston
- 3D Printing technology developed at MIT
- Launched 1st 3D Printer in 1998
- Launched 1st color 3D Printer in 2000
- Introduced High Definition 3D Printing (HD3DP) in 2005
- 2500+ customers worldwide
- 125+ authorized distributors worldwide

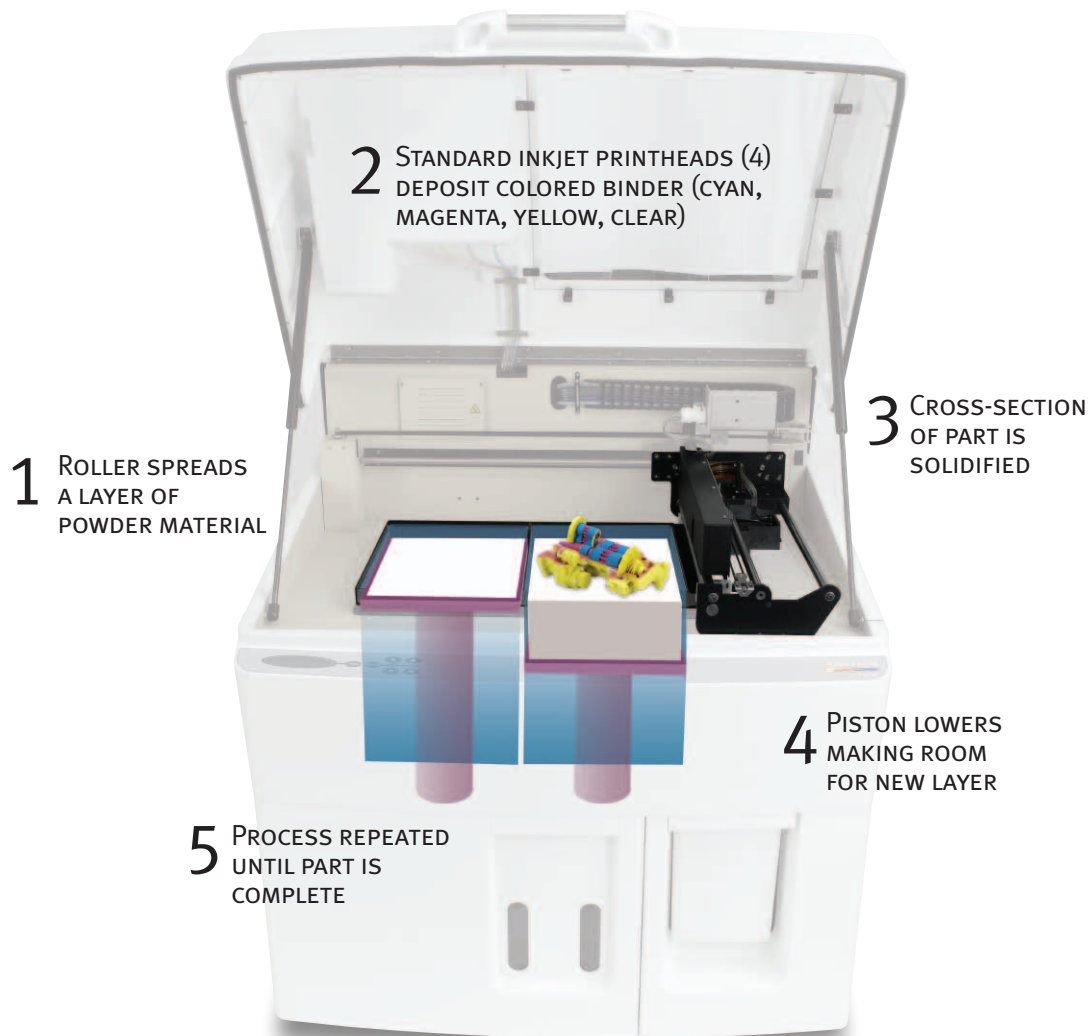


Z Corporation Technology

The Z Corp. technology works by creating a 3D physical model directly from digital data, layer by layer. A 3D CAD file is imported into the proprietary system software. The

software slices the file into thin cross-sectional slices, which are fed to the 3D Printer. The 3D Printer creates the model one layer at a time by spreading a layer of

powder and inkjet printing a binder in the cross-section of the part. The process is repeated until every layer is printed and the part is complete and ready to be removed.



Z Corporation 3D Printer Advantages

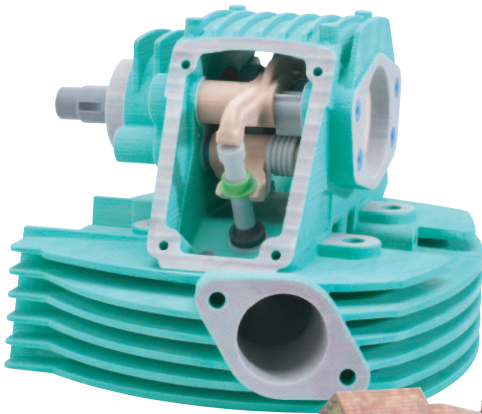
Speed

Z Corporation 3D Printers are the fastest commercially available 3D printers, 5-10x faster than other RP technologies. A part can be printed at the rate of 25mm (1") vertical per hour. In addition, multiple parts can be printed simultaneously resulting in increased throughput. In today's highly competitive global market, speed in product development has become a critical factor for success, and a Z Corp. printer can make the difference between getting a part in an hour and having to wait until the next day.



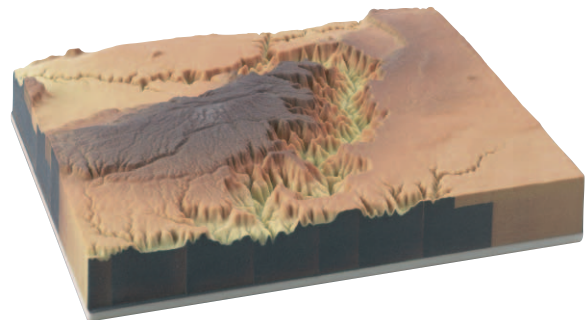
High-Quality Color

Z Corporation 3D Printers operate like a 2D desktop inkjet printer, allowing for the use of multiple print-heads to support full-color printing with dramatic increases in speed. Full, 24-bit color capabilities use colored binder materials (cyan, magenta, and yellow, just like a 2D printer) to produce millions of distinct colors. Full-color printing allows the addition of annotations, engineering labels and texture maps. Z Corporation's introduction of HD3DP (High-Definition 3D Printing) capabilities also supports the production of models having complex geometries and small, detailed features.



Affordability

Z Corporation® sets the standard for affordability in 3D printing. Because Z Corporation printers leverage standard inkjet printing technology, they are more reliable and affordable. The approach results in material usage costs that are a fraction of other rapid prototyping technologies; finished parts cost \$.10 USD per cubic centimeter in materials. A handheld part can be produced for about \$10 USD in material costs. Z Corporation 3D printers recycle all unused material, so you only pay for the actual materials used to produce a part.



Ease-of-Use

Z Corporation 3D printers are easy to install and operate in any standard office environment. With just a few hours of training, you can singlehandedly operate a Z Corporation 3D Printer. There is no need for a dedicated operator. Each Z Corporation 3D printing system is designed for use by multiple operators with limited expertise, which enhances accessibility to the equipment within your organization.

Spectrum Z510

NEXT-GENERATION HIGH-DEFINITION
COLOR 3D PRINTING SYSTEM



Build Speed

2-4 layers per minute

Build Size

254 x 356 x 203 mm
(10 x 14 x 8 inches)

Material Options

High performance composite,
elastomeric, direct casting

Layer Thickness

User selectable at time of printing;
.089-.203 mm (.0035-.008 inches)

Resolution: 600 x 540 dpi

Number of Printheads, Jets

4 printheads, 1216 jets total

System Software

Z Corporation's proprietary software accepts solid models in STL, VRML and PLY file formats as input. ZPrint software features 3D viewing, text labeling, and scaling functionality.

Equipment Dimensions

107 x 79 x 127 cm
(42 x 31 x 50 inches)

Equipment Weight

204 kg (450 lbs)

Power Requirements

100V, 7.8A or 115V, 6.8A
or 230V, 3.4A

Network Connectivity

TCP/IP 100/10 base T

Workstation Compatibility

Windows® 2000 Professional
and Windows® XP Professiona

Regulatory Compliance

CE, CSA

Special Facility Requirements

None

Applications and Industries



AUTOMOTIVE

Size: 25 x 28 x 11 cm
Printing Time: 8 hours



FOOTWEAR

Size: 10 x 30 x 5 cm
Printing Time: 3 hours



EDUCATION

Size: 13 x 25 x 13 cm
Printing Time: 7 hours



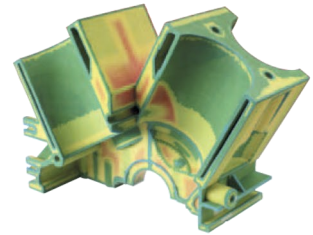
CONCEPT MODELING

Size: 21 x 33 x 20 cm
Printing Time: 12 hours



METAL CASTING

Size: 20 x 23 x 13 cm
Printing Time: 7 hours



FINITE ELEMENT ANALYSIS

Size: 14 x 20 x 10 cm
Printing Time: 4.5 hours



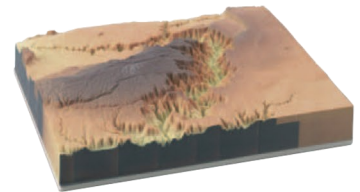
PRESENTATION MODELS

Size: 25 x 29 x 7 cm
Printing Time: 4.5 hours



ARCHITECTURE

Size: 33 x 25 x 10 cm
Printing Time: 8.5 hours



GIS

Size: 25 x 31 x 6 cm
Printing Time: 5.5 hours



CONSUMER PRODUCTS

Size: 8 x 18 x 5 cm
Printing Time: 2 hours



FUNCTIONAL TESTING

Size: 20 x 20 x 4 cm
Printing Time: 1.5 hours



MEDICAL

Size: 25 x 20 x 10 cm
Printing Time: 5.5 hours